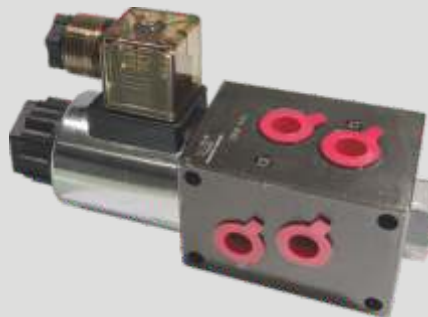
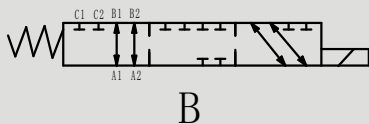


HSDFE080多回路选择阀

HSDFE080 FLOW DIVERTERS



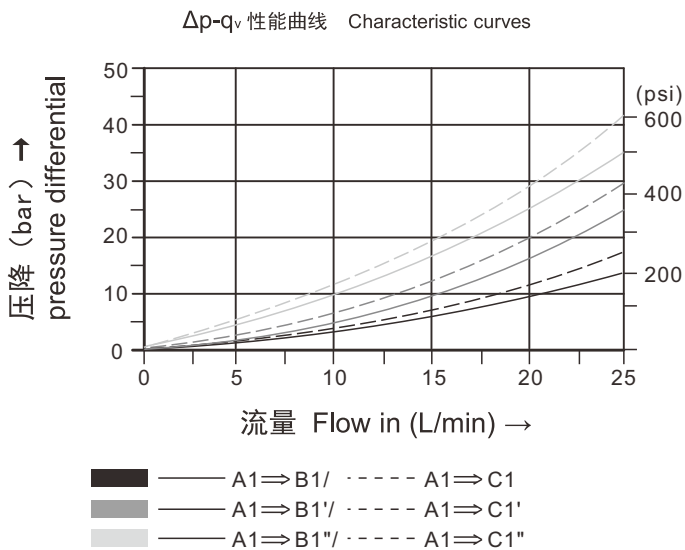
符号 SYMBOL



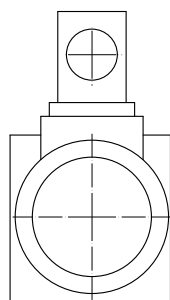
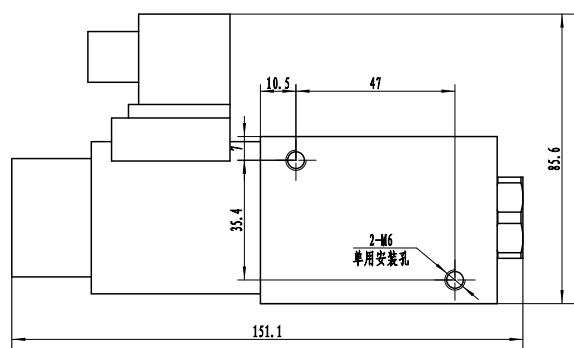
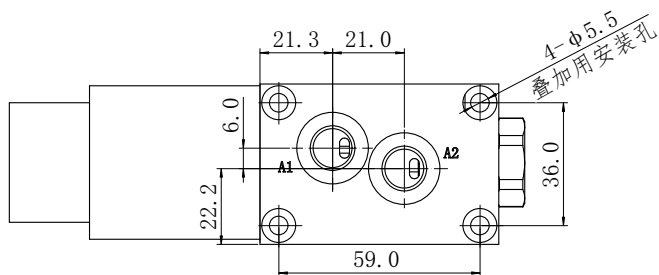
▶ 技术参数 Technical data

型号 Model	HSDFE080/6
最大流量 (L/min) Max Flow rate (L/min)	25
最大工作压力 (Mpa) Max operating pressure(MPa)	25
阀体 (材料) 表面处理 Valve body (Material) Surface treatment	表面磷化处理 / phosphating surface
油液清洁度 Oil cleanliness	NAS1638 9 级和 ISO4406 20/18/15 级 NAS1638 class 9 and ISO4406 class 20/18/15

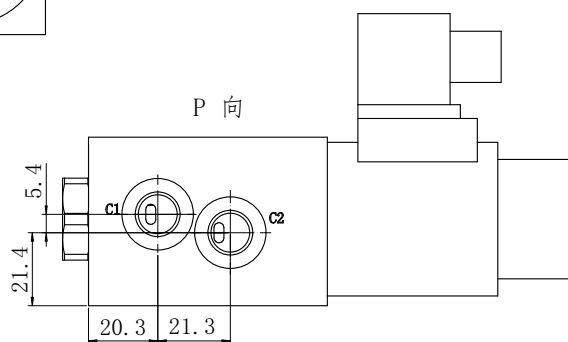
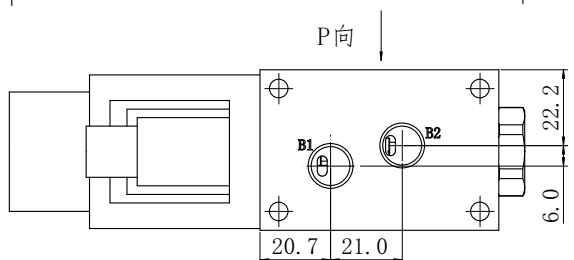
▶ 特性曲线 (在使用 HLP46 , $\vartheta_{\text{油}}=40\text{ }^{\circ}\text{C} \pm 5\text{ }^{\circ}\text{C}$ 时测得) Characteristic curves (measured with HLP46 , $\text{Voil}=40\text{ }^{\circ}\text{C} \pm 5\text{ }^{\circ}\text{C}$)



安装尺寸 Installation Dimensions



A1, A2, B1, B2, C1, C2
螺纹均为 G1/4



HSDFE	080/6	B	18W	ES	201-12VDC
-------	-------	---	-----	----	-----------

型号
Model

六通阀体
6-way body

机能符号
B型
Spool options
Type B

18W=泄漏油内排
18W=Internal drainage

线圈连接
101=不带线圈
Din 43650 三插
201-12VDC=额定电压直流12V
201-24VDC=额定电压直流24V

Coil options
101=without coil(only with tube kit)
With Din 43650 Connector
201-12VDC=Coil with 12VDC nominal voltage
201-24VDC=Coil with 24VDC nominal voltage

导磁套类型
ES=有故障检查按钮的导磁套 (不带线圈)
tube options
ES=tube with concealed manual override(without coil)