

HSV08-58C

三位五通电磁阀 滑阀型

Five-Way, Three-Position, Spool-Type
Cartridge Solenoid Valve

OPERATION

工作原理

When de-energized, the SV08-58C blocks flow between all work ports and load sense at port ① is vented to ③.

When coil S1 is energized, flow is allowed from ⑤ to ② and from ④ to ③.

When coil S2 is energized, flow is allowed from ⑤ to ④ and from ② to ③.

Load sense at port ① is connected to port ⑤ when spool is in the shifted positions.

失电时，②③④⑤不通，①口负载流向③

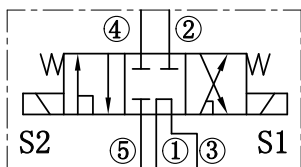
S1得电，⑤流向②，④流向③；

S2得电，⑤流向④，②流向③；

当滑阀芯处于位移状态，①口负载流向⑤。

SYMBOL

机能符号



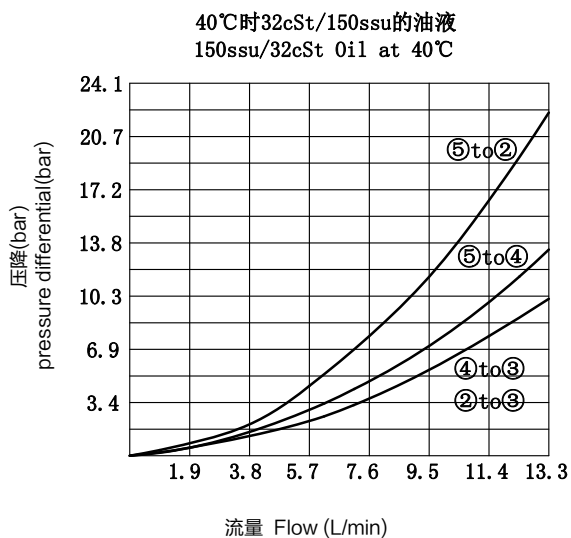
FEATURES

特性

- Continuous-duty solenoid
- Optional coil voltages and terminations
- Manual override option
- Efficient wet-armature construction
- Industry common cavity
- Compact size
- 可持续工作的电磁铁
- 可选线圈电压和终端
- 可带手动卸荷
- 高效能的电磁铁结构
- 工业通用插孔
- 结构紧凑

PRESSURE DROP VS.FLOW

性能图



SPECIFICATIONS

技术参数

工作压力 Working Pressure : 207bar

最大流量 Max Flow: 13.3L/min

内泄漏 Internal Leakage: <197ML/min.Max at 207bar

温度范围 Temperature Range: -30°C+120°C

线圈电压范围 Coil Rating:

90% to 110% of Rated Voltage

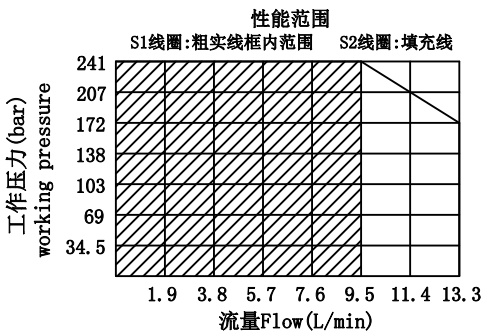
过滤 Filtration:

Critical Application-ISO 18/16/13

Non-Critical Application-ISO 19/17/14

介质 Fluids: 矿物油 Mineral-based fluids

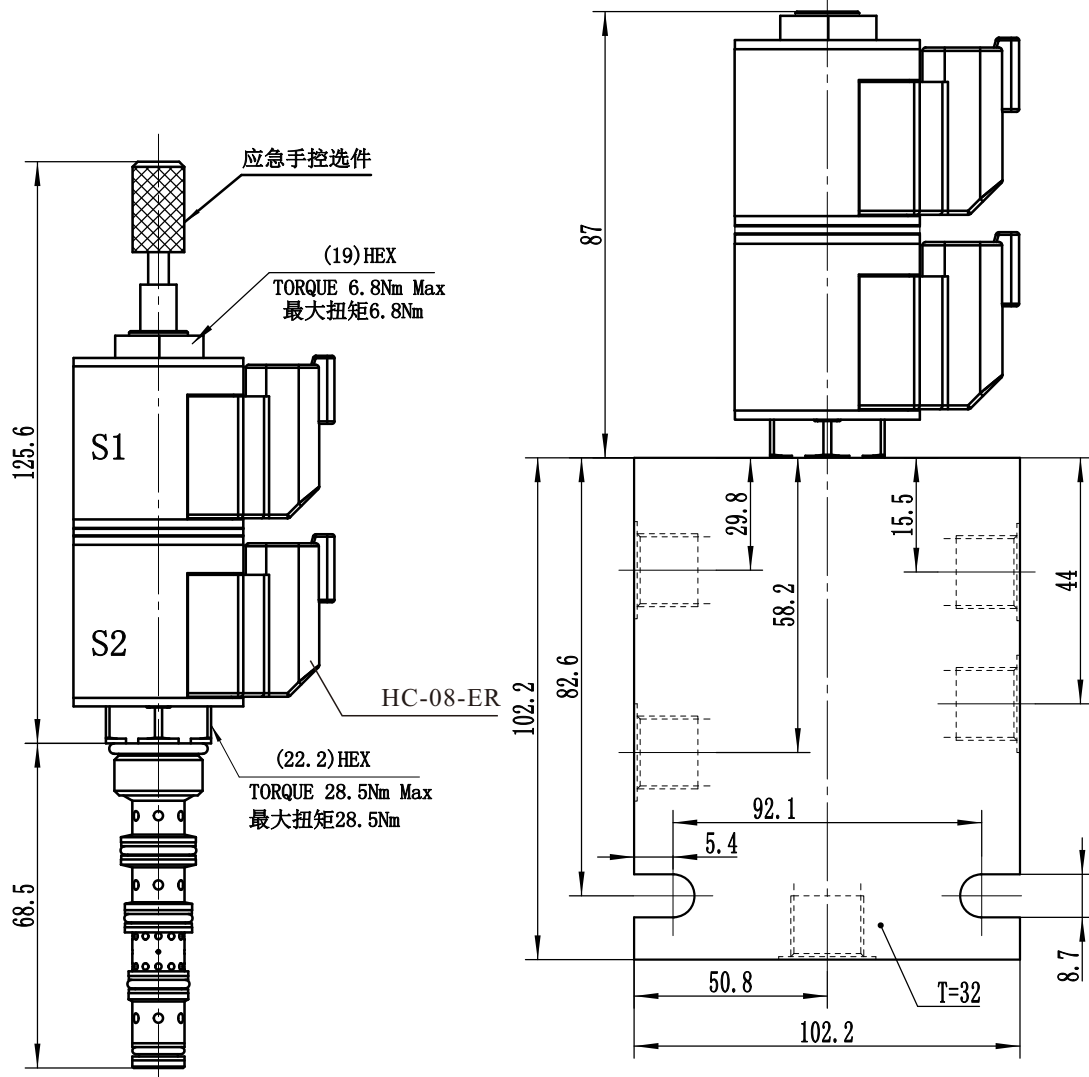
插孔 Cavity: 08-5



INSTALLATION DIMENSIONS 安装尺寸

Coil Must Be Installed With Lettering Up
安装线圈时字母必须朝上

Unit=Millimeters



HSV08-58C - * * * * *

M=Manual Override 手动卸荷
Omit for standard 省略为常规

BODY PORTING 阀块油口
6T=SAE6
阀块油口螺纹只有SAE6
The oil orifice is SAE6 only
(Omit of Cartridge only
省略为不带阀块)

密封材料
N=Nitrile Rubber Buna 丁晴橡胶(标准型)

COIL CONNECTION 线圈连接
D=Double Lead 双线
H=Hirschmann 三插
ER=Deutsch Connector
(Water proof Coil)
德意志插座 (防水线圈)

VOLTAGE 电压
1=12V Volt DC
2=24V Volt DC
3=110V Volt AC
4=220V Volt AC